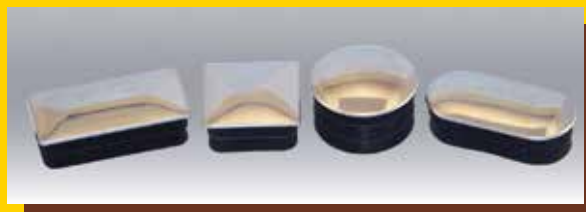
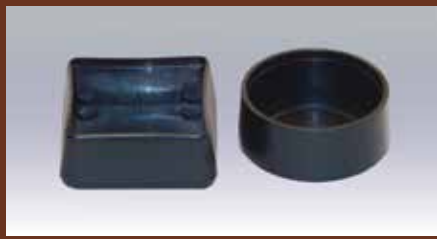




INTERNATIONAL EQUIPMENT COMPONENTS, INC.

www.levelingmounts.com & www.iec-corp.com

CAP & PLUG PRODUCTS



**FEET
SLIDE
PROTECT
FINISH**

Ph. 562.597.4533

Welcome ...

We're pleased to introduce our newly expanded line of cap and plug products. This new catalog includes hundreds of products used for feet, sliding, protecting and finishing of equipment, furniture and displays.

We've included overview pages of IEC's complete line of caps and plugs, a selection guide and product tables with specifications for easily finding an off-the-shelf cap or plug for your application. Additionally, a standard quote form has been included for requesting OEM pricing on larger quantities.

IEC's mission since 1992 has been to lead the equipment component industry in meeting the needs of our OEM customers. We have expanded our broad line of products with more cap and plug items to service your requirements for inexpensive solutions.

We specialize in providing products that offer a wide range of solutions for leveling, gliding, sliding, surface protection and noise control. We have design engineers available who can assist you with your application and help you in selecting the right product, the right size, the right material and the right price for your requirement.

We recognize the need in OEM manufacturing for high performance products, attractive designs and pricing to make your products more competitive. We have made every effort to address those needs in this new catalog. We lead the Industry with the most complete line of widely sought industrial and commercial component products available in thousands of sizes, materials and designs.

Paying attention to our customers and their needs for over 20 years has enabled IEC to become the leader in leveling, gliding and surface protection. This dedicated effort has resulted in thousands of new products, stronger customer service and assurance that the products you specify today will continue to be available for the duration of your product life-cycle. We appreciate your interest and look forward to being of service.



CONTENTS

INTRODUCTION

CONTENTS 3

OVERVIEW 4-6

SELECTION 7

TUBE CAPS & PLUGS - RIBBED FIN (I.D.) TYPE

Tube Caps — Square 8

Tube Caps — Round 9

Tube Caps — Rectangular 10

Domed Tube Caps 11

Angle Iron Caps 11

Felt Tube Glides 12

Steel Base Tube Glides 12

Swivel Tube Glides — Nylon 12

Swivel Tube Glides — Felt 12

Swivel Tube Glides — Steel 12

Felt Tube Glides 12

Octagon Square Leveler 13

Octagon Round Leveler 13

TUBE CAPS OUTSIDE DIAMETER (O.D.) TYPE

Clear Carpet Slider — Round 13

Clear Carpet Slider — Square 13

Tube Caps OD Type — Square 14

Tube Caps OD Type — Round 14

Ball Glides OD Type 14

Weld Cup Caps for Patio Furniture 14

Rubber Crutch Tip Glides 15

Vinyl Tube Caps — Round 16

Vinyl Tube Caps — Square 16

Clear Sleeve Felt Floor Protectors 17

Vinyl Replacement Chair Tips 17

Clear Plastic & Felt Sled Glides 17

Slip On Felt Feet 18

Felt Cup Peel and Stick Floor Protectors 18

Slip On Sliders 18

Non-Skid Sleeves 18

METAL TUBE CAPS & PLUGS

Steel & Chrome Tube Caps 19

BOLT NUT CAPS

Bolt Nut Caps 20

PLASTIC STRETCH NETTING

Plastic Stretch Netting 21

RFQ FAX-BACK FORM

Request A Quote Form 22

Warranty and Disclaimer 23



TUBE CAPS & PLUGS

TUBE CAPS & PLUGS - RIBBED FIN (I.D.) TYPE

Rugged black polyethylene square tube caps (plug type) are designed to fit inside tubing for both feet and cap applications. Ribbed fins provide a positive fit inside the tube to fit a variety of wall thickness without falling out.



SNAP-ON NYLON CAP GLIDES

Nylon snap-on cap glides snap over the base of several types of metal based glides. Examples: IL16 thru IL18, IL22 and IL23.



TUBE CAPS - DOMED & ANGLE IRON

Black polyethylene domed surface tube caps (left) fit any leg angle. Black polyethylene angle iron caps (right) fit standard angle iron (.125" thick steel). Used as floor protectors and caps to cover sharp edges.



TUBE GLIDES - FELT & STEEL BASE

Black felt and steel tube glides with non-swivel base. The flexible fins fit 16 or 18 gauge tubing. The steel base glides slide easily on carpet.



TUBE GLIDES - SWIVEL BASE

Black plastic swivel tube glides. Base swivels approximately 30 degrees. Solid nylon, felt or steel base. Steel base glides slide easily on carpet.



TUBE GLIDES - ANGLED

Black plastic angled tube glides feature 5, 15 or 25 degree angle.



OCTAGON LEVELER / TUBE INSERTS

Black nylon tube inserts and threaded octagon levelers are designed to fit hollow tubing.





TUBE CAPS & PLUGS

TUBE CAPS - OUTSIDE DIAMETER (O.D.) TYPE

Black polyethylene *o.d. type tube caps* are designed to fit over the outside diameter (OD). Used as caps or feet. The flange height is 5/8".



TUBE CAPS - WELD CUP

White polyethylene *weld cup caps* fit inside standard weld cups for patio chairs. (1/2" tall). The cap O.D. should match the I.D. of the leg or foot.



TUBE CAPS - VINYL ROUND & SQUARE

Black *vinyl tube caps* are resistant to tearing or splitting. Flexible design allows for stretching onto slightly larger dimensions to achieve a snug fit.



TRANSPARENT NON-SKID SLEEVES

Transparent *non-skid sleeves* stretch to fit over various leg sizes, in both round and square shapes. The flexible sleeve will form to the square leg.



VINYL & PVC SLEEVE GLIDES WITH FELT

Transparent *vinyl sleeve glides and PVC glides with felt* stretch to fit over various leg sizes, in both round and square shapes. The flexible sleeve will form to the square leg.



TUBE CAPS - STEEL NICKEL/CHROME PLATED

Nickel-plated *metal spring tube caps* available in round and square sizes. The caps have a bright lustrous finish. The round caps feature a slightly domed top.



TUBE CAPS CHROME TOP

Chrome-top ribbed plastic tube caps available in round, square, rectangular and oval shapes. All have a slightly domed top. Used for cap applications and to help furniture slide on carpet.





TUBE CAPS & PLUGS (OTHER PRODUCTS)

CLEAR FLOOR CAPS / CARPET SLIDERS

Peel and stick carpet sliders / floor protectors help furniture (couches, entertainment centers, pianos, etc.) slide on carpet and prevent snagging and tearing.



BALL GLIDES

Polyethylene ball glides can accommodate any leg angle. They fit over round rod or tubing.



CRUTCH TIP GLIDES & CHAIR TIPS

Rubber crutch tip glides available in black (-B), white (-W) and gray (-G). Non-skid design. Grey hard vinyl chair tip floor protectors reduce scratches, noise and rust stains.



SLED GLIDES

Clear plastic and felt sled glides snap over rods or tubing to reduce scratching and noise. Also available with heavy-duty floor protection felt bonded to the plastic glide.



SLIP ON FELT FEET & SLIDERS

Slip-on felt feet and sliders are available in two sizes. They slip over round or square legs with or without feet already installed in the legs. Useful for both noise reduction and floor protection.



FELT CUP PEEL & STICK FLOOR PROTECTORS

Dark brown felt cup "peel & stick" floor protectors reduce scratches, noise and rust stains.



BOLT AND NUT CAPS

These bolt and nut caps are made from high-impact plastic with a UV stabilizer. Designed for both indoor and outdoor use, they protect against weathering and tampering and improve appearance.



PLASTIC STRETCH NETTING

Standard and heavy-duty plastic stretch netting provides protection against damage to exterior surfaces of machined, polished, plated, coated and threaded areas.





Features by Family	Plugs	Caps	Slip-Over Felt	Slip-Over Sliders	Non-Skid Sleeves
Square	Yes	Yes	Yes	Yes	Yes
Round	Yes	Yes	Yes	Yes	Yes
Rectangular	Yes	N/A	N/A	N/A	N/A
Domed	Yes	N/A	N/A	N/A	N/A
Angle Iron	N/A	Yes	N/A	N/A	N/A
Polyethylene	Yes	Yes	N/A	N/A	N/A
Plastic	N/A	Yes	N/A	Yes	N/A
Nylon	N/A	N/A	N/A	Yes	N/A
Vinyl	N/A	Yes	N/A	N/A	Yes
Felt	Yes	N/A	Yes	N/A	N/A
Rubber	Yes	N/A	N/A	N/A	Yes
Chrome	Yes	Yes	N/A	N/A	N/A
Black	Yes	N/A	Yes	Yes	Yes
White	Yes	N/A	N/A	N/A	Yes
Grey	N/A	N/A	Yes	Yes	Yes
Brown	N/A	N/A	Yes	Yes	N/A
Transparent	N/A	Yes	Yes	Yes	Yes
Catalog Page	8-16, 19-20	8-16, 19-20	17-18	18	18

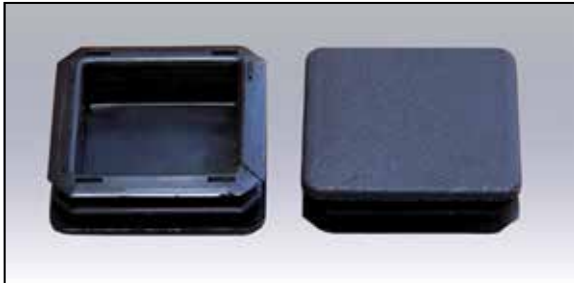


TUBE CAPS & PLUGS

SQUARE

Tube Caps – Square

These rugged *black polyethylene square tube caps* (plug type) are designed to fit inside tubing for both feet and cap applications. The ribbed fins provide a positive fit inside the tube to fit a variety of wall thickness without falling out. The textured top resists scratches and scarring. Glossy finish is also available.



Measure the outside tube dimension to order from our spec sheet.

Measure the inside dimension also, as this will help us to recommend the right plug for your application, especially if you have thick wall tubing or pipe. ABS available upon special request on some sizes.

For solid legs, use the OD cap shown on the following pages. For angled leg applications, we recommend the domed caps, ball cap or swivel glides also shown later in this catalog section.

White (-WH) available on 3/4", 1", 1-1/4" and 1-1/2" sizes. Tubing gauge refers to the wall thickness. 18 GA is thin wall (.05") and 5 GA is thick (.21"). Wall thickness is equal to the OD of the tube, minus the ID then divide by 2 (or measure directly using calipers).

TUBE CAPS — SQUARE

P/N (square)	Tubing O.D.	Tubing Gauge
IL24D-CAP-SQ	3/8	16-20
IL24C-CAP-SQ	1/2	16-18
IL24B-CAP-SQ	5/8	14-20
IL24A-CAP-SQ	3/4	14-20
IL24-CAP-SQ	7/8	14-20
IL25-CAP-SQ	1	14-20
IL25A-CAP-SQ	1-1/8	16-20
IL26-CAP-SQ	1-1/4	11-19
IL26-CAP-SQ-10	1-1/4	10-14
IL26A-CAP-SQ	1-3/8	10-16
IL27-CAP-SQ	1-1/2	12-18
IL27-CAP-SQ-10	1-1/2	10-14
IL27B-CAP-SQ	1-3/4	14-18
IL27B-CAP-SQ-10	1-3/4	10-14
IL27A-CAP-SQ	2	12-18
IL27A-CAP-SQ-5	2	5-8
IL27A2-CAP-SQ	2-1/4	10-14
IL27A3-CAP-SQ	2-3/8	1-3
IL27C-CAP-SQ	2-1/2	10-14
IL27E-CAP-SQ	2-3/4	14-20
IL27E-CAP-SQ-8	2-3/4	8-14
IL27F-CAP-SQ-10	3	10-14
IL27F2-CAP-SQ	3	8-14
IL27F-CAP-SQ-8	3	3-7
IL27G-CAP-SQ	3-1/8	6-11
IL27H-CAP-SQ	3-1/2	14-20
IL27J-CAP-SQ	3-7/8	4-8
IL27K-CAP-SQ	4	4-11
IL27M-CAP-SQ	4-3/4	6-11
IL27N-CAP-SQ	5	7-11
IL27P-CAP-SQ	6	10-14

TUBE GAUGE	18	16	14	12	10	8	6	4
WALL THICKNESS	.05	.06	.08	.10	.135	.165	.195	.225



TUBE CAPS & PLUGS

ROUND

Tube Caps – Round

These rugged, *black polyethylene round tube caps* (plug type) are designed to fit inside tubing for both feet and cap applications. The ribbed fins provide a positive fit inside the tube to fit a variety of wall thicknesses without falling out. The textured top resists scratches and scarring. Glossy finish also available.



Measure the outside tube dimension to order from our spec sheet.

Measuring the inside dimension as well, will help us to recommend the right plug for your application, especially if you have thick wall tubing or pipe. ABS available upon special request on some sizes.

For solid legs, use the OD cap shown on the following pages. For angled leg applications, we recommend the domed caps, ball cap or swivel glides also shown later in this catalog section.

White (-WH) available on 3/4", 1", 1-1/4" and 1-1/2" sizes. Tubing gauge refers to the wall thickness. 18 GA is thin wall (.05") and 5 GA is thick (.21"). Wall thickness is equal to the OD of the tube, minus the ID then divide by 2 (or measure directly using calipers).

TUBE CAPS — ROUND

P/N (round)	Tubing O.D.	Tubing Gauge
IL24D-CAP-RD	3/8	19
IL24C-CAP-RD	1/2	16-20
IL24B-CAP-RD	5/8	14-20
IL24A-CAP-RD	3/4	14-20
IL24-CAP-RD	7/8	14-20
IL25-CAP-RD	1	14-20
IL25A-CAP-RD	1-1/8	14-18
IL26-CAP-RD	1-1/4	11-19
IL26A-CAP-RD	1-3/8	14-18
IL27-CAP-RD	1-1/2	11-19
IL27B2-CAP-RD	1-5/8	11-19
IL27B-CAP-RD	1-3/4	11-19
IL27B3-CAP-RD	1-7/8	11-19
IL27A-CAP-RD	2	11-19
IL27A2-CAP-RD	2-1/4	14-20
IL27A3-CAP-RD	2-3/8	10-14
IL27C-CAP-RD	2-1/2	14-20
IL27E-CAP-RD	2-3/4	7-14
IL27E2-CAP-RD	2-7/8	4-7
IL27F-CAP-RD	3	8-14
IL27F-CAP-RD-8	3	8-12
IL27H-CAP-RD	3-1/2	6-13
IL27K-CAP-RD	4	8-14
IL27K-CAP-RD-5	4	5-11
IL27K2-CAP-RD	4-1/2	7-11
IL27M-CAP-RD	4-3/4	6-11

TUBE GAUGE	18	16	14	12	10	8	6	4
WALL THICKNESS	.05	.06	.08	.10	.135	.165	.195	.225

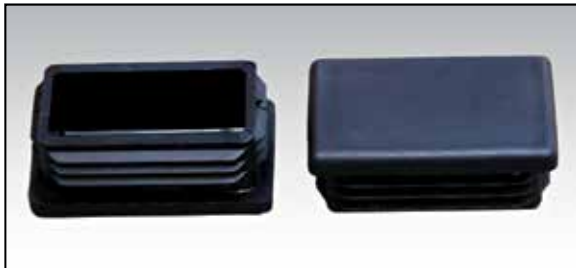


TUBE CAPS & PLUGS

RECTANGULAR

Tube Caps – Rectangular

These rugged *black polyethylene rectangular tube caps* (plug type) are designed to fit inside tubing for both feet and cap applications. The ribbed fins provide a positive fit inside the tube to fit a variety of wall thicknesses and won't fall out. The textured top resists scratches and scarring. Glossy finish also available.



Measure the outside tube dimension to order from our spec sheet.

Measuring the inside dimension as well, will help us to recommend the right plug for your application, especially if you have thick wall tubing or pipe. ABS available upon special request on some sizes.

Tubing gauge refers to the wall thickness. 18 GA is thin wall (.05") and 5 GA is thick (.21"). Wall thickness is equal to the OD of the tube, minus the ID then divide by 2 (or measure directly using calipers).

TUBE CAPS — RECTANGULAR

P/N (rect.)	Tubing O.D.	Tubing Gauge
IL24C-RE-CAP	1/2x1	16-18
IL24C2-RE-CAP	1/2x1-1/2	14-20
IL24B-RE-CAP	5/8x1-3/8	14-20
IL24A-RE-CAP	3/4x1-1/2	14-20
IL24-RE-CAP	1x1-1/2	12-18
IL25-RE-CAP	1x2	14-20
IL25-RE-CAP-10	1x2	10-14
IL25B-RE-CAP	1x2-1/2	16-18
IL25A-RE-CAP	1x3	14-20
IL26-RE-CAP	1-1/4x2	14-20
IL27A2-RE-CAP	1-1/2x2-1/2	12-16
IL27-RE-CAP	1-1/2x3	10-14
IL27A-RE-CAP	2x3	14-20
IL27A-RE-CAP-10	2x3	10-14
IL27C-RE-CAP	2x4	14-20
IL27C-RE-CAP-10	2x4	10-14
IL27C-RE-CAP-8	2x4	6-8
IL27D-RE-CAP	2x5	8
IL27D-RE-CAP-10	2x5	10
IL27E-RE-CAP	3x4	6-8

TUBE GAUGE	18	16	14	12	10	8	6	4
WALL THICKNESS	.05	.06	.08	.10	.135	.165	.195	.225

Snap On Nylon Glide Caps

These *nylon glide caps* snap over the base of several types of metal based glides. Examples: IL16 thru IL18, IL22 & IL23.



SNAP-ON NYLON GLIDE CAPS

P/N	FITS DIAMETER	FITS BASE
IL-CAP-NYL-1	7/8	STD BASE
IL-CAP-NYL-2	15/16	STD BASE
IL-CAP-NYL-3	1	STD BASE
IL-CAP-NYL-4	1-1/16	STD BASE
IL-CAP-NYL-5	1-1/4	STD BASE
IL-CAP-NYL-6	1-1/4	THICK BASE
IL-CAP-NYL-7	1-1/4	CONICAL BASE



TUBE CAPS & PLUGS
DOMED & ANGLE IRON

Domed Tube Caps (Plug Type)

These *black polyethylene tube caps* have a domed surface which can accommodate any leg angle. The ribbed fins are flexible allowing these inserts to fit varying wall thicknesses (16-20 gauge).



SQUARE — DOMED TYPE

P/N (square)	Tubing O.D.	Tubing Gauge
IL24A-SQ-CAP-DOME	3/4	16-20
IL24-SQ-CAP-DOME	7/8	16-20
IL25-SQ-CAP-DOME	1	16-20

ROUND — DOMED TYPE

P/N (round)	Tubing O.D.	Tubing Gauge
IL24B-RD-CAP-DOME	5/8	16-20
IL24A-RD-CAP-DOME	3/4	16-20
IL24-RD-CAP-DOME	7/8	16-20
IL25-RD-CAP-DOME	1	16-20
IL26-RD-CAP-DOME	1-1/4	16-20
IL27-RD-CAP-DOME	1-1/2	16-20
IL27B-RD-CAP-DOME	1-3/4	16-20

Angle Iron Caps

These *black polyethylene angle iron caps* fit standard angle iron (.125" thick steel). They are used as floor protectors and caps to cover sharp edges.



ANGLE IRON CAPS

P/N	LEG Length
IL25-CAP-ANGLE	1
IL26-CAP-ANGLE	1-1/4
IL27-CAP-ANGLE	1-1/2

TUBE GAUGE	18	16	14	12	10	8	6	4
WALL THICKNESS	.05	.06	.08	.10	.135	.165	.195	.225



Felt & Steel Base Tube Glides

These *black felt and steel tube glides* have a non-swivel base. The flexible fins fit 16 or 18 gauge tubing. Steel base glides slide easily on carpet.



Swivel Tube Glides

These *black plastic swivel tube glides* swivel approx. 30 degrees. Available with solid nylon base, felt or steel base. Steel base glides slide easily on carpet. Coming Soon: Teflon slider and non-skid rubber bases.



Angled Tube Glides

These *black plastic angled tube glides* have a 5, 15 or 25 degree angle.



FELT TUBE GLIDES

P/N (ROUND)	TUBE O.D.	GAUGE	FIN Height
IL24A-PLUG-FELT	3/4	16-18	3/4
IL24-PLUG-FELT	7/8	16-18	3/4
IL25-PLUG-FELT	1	16-18	3/4
IL25A-PLUG-FELT	1-1/8	16-18	3/4
IL26-PLUG-FELT	1-1/4	16-18	1

STEEL BASE TUBE GLIDES

P/N (ROUND)	TUBE O.D.	GAUGE	FIN Height
IL24A-PLUG-STL	3/4	16-18	3/4
IL24-PLUG-STL	7/8	16-18	3/4
IL25-PLUG-STL	1	16-18	3/4
IL25A-PLUG-STL	1-1/8	16-18	3/4
IL26-PLUG-STL	1-1/4	16-18	1

SWIVEL TUBE GLIDES — NYLON

P/N (ROUND)	TUBE O.D.	GAUGE	FIN Height
IL24A-PLUG-SVL	3/4	16-18	1
IL24-PLUG-SVL	7/8	16-18	1
IL25-PLUG-SVL	1	16-18	1
IL25A-PLUG-SVL	1-1/8	16-18	1

SWIVEL TUBE GLIDES — FELT

P/N (ROUND)	TUBE O.D.	GAUGE	FIN Height
IL24A-PLUG-SVL-FELT	3/4	16-18	1
IL24-PLUG-SVL-FELT	7/8	16-18	1
IL25-PLUG-SVL-FELT	1	16-18	1
IL25A-PLUG-SVL-FELT	1-1/8	16-18	1

SWIVEL TUBE GLIDES — STEEL

P/N (ROUND)	TUBE O.D.	GAUGE	FIN Height
IL24A-PLUG-SVL-STL	3/4	16-18	1
IL24-PLUG-SVL-STL	7/8	16-18	1
IL25-PLUG-SVL-STL	1	16-18	1
IL25A-PLUG-SVL-STL	1-1/8	16-18	1

ANGLED TUBE GLIDES

P/N (SQUARE)	TUBE O.D.	GAUGE	Base Angle
IL24A-PLUG-ANGLE-5	3/4	16-18	5
IL24A-PLUG-ANGLE-25	3/4	16-18	25
IL24-PLUG-ANGLE-5	7/8	16-18	5
IL24-PLUG-ANGLE-25	7/8	16-18	25
IL25-PLUG-ANGLE-15	1	16-18	15



INTERNATIONAL EQUIPMENT COMPONENTS, INC.

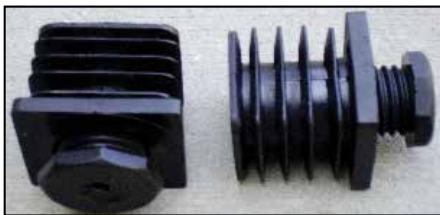
Phone: 562.597.4533 eMail: sales@iec-corp.com

Web: www.levelingmounts.com | www.iec-corp.com

TUBE CAPS & PLUGS
INSERT SETS
& CARPET SLIDERS

Octagon Leveler and Tube Insert Sets

These *black nylon tube inserts* and *threaded octagon leveler combinations* are designed to fit hollow tubing. They support 100 lb loads and adjust 1" in height. For heavy duty applications use the steel "star clip" threaded inserts in the Light Duty Leveler catalog.



Clear Floor Caps/Carpet Sliders

These peel and stick *floor cap protectors/carpet sliders* help furniture (couches, entertainment centers, pianos, etc.) slide on carpet and prevent snagging and tearing.



OCTAGON SQUARE — LEVELER

P/N (square)	Tubing O.D.	Tubing Gauge
IL24A-SQ-OCT	3/4	16-18
IL24-SQ-OCT	7/8	16-18
IL25-SQ-OCT	1	16-18
IL25A-SQ-OCT	1-1/8	16-18
IL26A-SQ-OCT	1-3/8	16-18
IL27-SQ-OCT	1-1/2	16-18
IL27B-SQ-OCT	1-3/4	16-18
IL27A-SQ-OCT	2	16-18

OCTAGON ROUND — LEVELER

P/N (round)	Tubing O.D.	Tubing Gauge
IL26-RD-OCT	1-1/4	16-18
IL26A-RD-OCT	1-3/8	16-18
IL27-RD-OCT	1-1/2	16-18
IL27B-RD-OCT	1-3/4	16-18
IL27A-RD-OCT	2	16-18
IL27A2-RD-OCT	2-1/4	16-18

CLEAR CARPET SLIDERS — ROUND

P/N (round)	SIZE
IL27-SLDR-CLR-RD	1-1/2
IL27B-SLDR-CLR-RD	1-3/4
IL27A-SLDR-CLR-RD	2-1/4
IL27E-SLDR-CLR-RD	2-3/4
IL27K-SLDR-CLR-RD	4

CLEAR CARPET SLIDERS — SQUARE

P/N (square)	SIZE
IL27A-SLDR-CLR-SQ	2-1/4
IL27H-SLDR-CLR-SQ	3-1/2
IL27K-SLDR-CLR-SQ	4

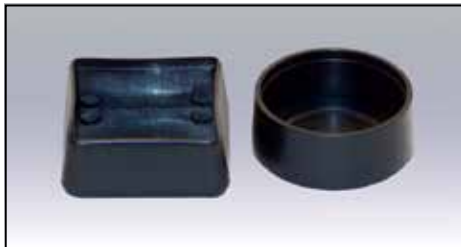


TUBE CAPS & PLUGS

OD TYPE

Tube Caps (OD Style)

These *black polyethylene tube caps* are designed to fit over the outside diameter (OD). They can be used as caps or feet. The height of the flange is 5/8".



Ball Glides (OD Type)

These *polyethylene ball glides* can fit any leg angle. They fit over round rod or tubing.



Weld Cup Caps for Patio Chairs

These *white polyethylene cup caps* fit inside standard weld cups for patio chairs. (1/2" tall). The cap O.D. should match the ID of your feet.



SQUARE — OD TYPE

P/N (square)	Tubing O.D.
IL24C-SQ-CAP-OD	1/2
IL24B-SQ-CAP-OD	5/8
IL24A-SQ-CAP-OD	3/4
IL25-SQ-CAP-OD	1
IL26-SQ-CAP-OD	1-1/4
IL27A-SQ-CAP-OD	2
IL27F-SQ-CAP-OD	3

ROUND — OD TYPE

P/N (round)	Tubing O.D.
IL24D-RD-CAP-OD	3/8
IL24C-RD-CAP-OD	1/2
IL24B-RD-CAP-OD	5/8
IL24A-RD-CAP-OD	3/4
IL24-RD-CAP-OD	7/8
IL25-RD-CAP-OD	1
IL25A-RD-CAP-OD	1-1/8
IL26-RD-CAP-OD	1-1/4
IL27-RD-CAP-OD	1-1/2
IL27B2-RD-CAP-OD	1-5/8
IL27B-RD-CAP-OD	1-3/4
IL27A-RD-CAP-OD	2
IL27C-RD-CAP-OD	2-1/2
IL27F-RD-CAP-OD	3

BALL GLIDES

P/N	Leg Dia.	Ball Dia.
IL24E-CAP-BALL	5/16	5/8
IL24C-CAP-BALL	1/2	7/8
IL24B-CAP-BALL	5/8	1

WELD CUP CAPS

P/N	CAP O.D.
IL26-R-CAP-WELD	1.25
IL27-R-CAP-WELD	1.50

**Rubber Crutch Tip Glides**

These *rubber crutch tip glides* are available in black (-B), white (-W) and gray (-G). They are non-skid and the white and gray types are non-marring. They are useful for crutches, walkers, canes, tables, chairs, etc.

For hollow legs, we recommend using a washer in the bottom of the glide to keep the leg from cutting through the glide.

**RUBBER CRUTCH TIP GLIDES**

P/N	LEG O.D.	HEIGHT
IL24F-CTG-B	1/8	3/8
IL24G-CTG-B	3/16	1/2
IL24E-CTG-B	1/4	3/4
IL24D-CTG-B	3/8	1-1/8
IL24C-CTG-B	1/2	1-3/16
IL24B-CTG-B	5/8	1-9/32
IL24A-CTG-B	3/4	1-3/8
IL24-CTG-B	7/8	1-1/2
IL25-CTG-B	1	1-9/16
IL25A-CTG-B	1-1/8	1-11/16
IL26-CTG-B	1-1/4	1-13/16
IL27-CTG-B	1-1/2	7/8
IL27A2-CTG-B	2-1/4	1-5/16
IL24C-CTG-W	1/2	1-13/16
IL24B-CTG-W	5/8	1-9/32
IL24A-CTG-W	3/4	1-3/8
IL24-CTG-W	7/8	1-1/2
IL25-CTG-W	1	1-9/16
IL25A-CTG-W	1-1/8	1-11/16
IL26-CTG-W	1-1/4	1-13/16
IL27-CTG-W	1-1/2	7/8
IL24C-CTG-G	1/2	1-3/16
IL24B-CTG-G	5/8	1-9/32
IL24A-CTG-G	3/4	1-3/8
IL24-CTG-G	7/8	1-1/2
IL25-CTG-G	1	1-9/16
IL25ACTG-G	1-1/8	1-11/16
IL26-CTG-G	1-1/4	1-13/16
IL27-CTG-G	1-1/2	7/8



Vinyl Tube Caps – Round

These *round black vinyl tube caps* are resistant to tearing or splitting. The flexible design allows for stretching onto slightly larger dimensions to achieve a snug fit. Commonly used to cover tube ends and protect threads from moisture and impact damage. They also function as a reusable mask for painting, plating or powder coating. The high gloss material is well suited for decorative applications.



Vinyl Tube Caps – Square

These *square black vinyl caps* are resistant to tearing or splitting. The flexible design allows for stretching onto slightly larger dimensions for a snug fit. Commonly used to cover tube ends and protect threads from moisture and impact damage. They also serve as a reusable mask for painting, plating or powder-coating. The high-gloss material is well suited for decorative applications.

VINYL TUBE CAPS — SQUARE

P/N (square)	Tubing O.D.	Flange Height
IL24E-CAP-VNL-SQ	1/4	1/2
IL24C-CAP-VNL-SQ	1/2	1/2
IL24B-CAP-VNL-SQ	5/8	1/2
IL24A-CAP-VNL-SQ	3/4	1/2
IL25-CAP-VNL-SQ	1	1
IL26-CAP-VNL-SQ	1-1/4	1
IL27-CAP-VNL-SQ	1-1/2	1
IL27B-CAP-VNL-SQ	1-3/4	1
IL26C-CAP-VNL-SQ	1-7/8	1
IL27A-CAP-VNL-SQ	2	1
IL27H-CAP-VNL-SQ	3-1/2	1
IL27K-CAP-VNL-SQ	4	1

VINYL TUBE CAPS—ROUND

P/N (round)	Tubing O.D.	Flange Height
IL24F-CAP-VNL-RD	1/8	1/2
IL24E-CAP-VNL-RD	1/4	1/2
IL24D-CAP-VNL-RD	3/8	1/2
IL24C-CAP-VNL-RD	1/2	1/2
IL24B-CAP-VNL-RD	5/8	1/2
IL24A-CAP-VNL-RD	3/4	1/2
IL24-CAP-VNL-RD	7/8	1/2
IL25-CAP-VNL-RD	1	1
IL25A-CAP-VNL-RD	1-1/8	1
IL26-CAP-VNL-RD	1-1/4	1
IL26A-CAP-VNL-RD	1-3/8	1
IL27-CAP-VNL-RD	1-1/2	1
IL26B-CAP-VNL-RD	1-5/8	1
IL27B-CAP-VNL-RD	1-3/4	1
IL26C-CAP-VNL-RD	1-7/8	1
IL27A-CAP-VNL-RD	2	1
IL26E-CAP-VNL-RD	2-1/4	1
IL27C-CAP-VNL-RD	2-1/2	1
IL27E-CAP-VNL-RD	2-3/4	1
IL27F-CAP-VNL-RD	3	1
IL27G-CAP-VNL-RD	3-1/4	1
IL27H-CAP-VNL-RD	3-1/2	1
IL27J-CAP-VNL-RD	3-5/8	1
IL27K-CAP-VNL-RD	4	1
IL27L-CAP-VNL-RD	4-1/4	1
IL27N-CAP-VNL-RD	4-3/8	1
IL27P-CAP-VNL-RD	4-7/16	1
IL27M-CAP-VNL-RD	4-3/4	1
IL27T-CAP-VNL-RD	5-1/2	1



Clear Vinyl Stretch Sleeve Glides



IEC's transparent *vinyl sleeve glides* stretch to fit over various leg sizes, in both round and square shapes. For square legs increase size by 1/4 inch. The flexible sleeve will form to the square leg. A heavy-duty dark brown felt pad is bonded to the bottom of the sleeve to reduce scratching, noise and rust stains.

Typical applications are chairs, tables, desks, stools, bar stools, walkers, crutches.

Clear PVC Felt Glides

IEC's clear *PVC felt glides* are made to fit the specified round leg size but will stretch slightly. They have a red-brown felt pad.

Vinyl Replacement Chair Tips (with or without Felt)



IEC's hard grey *vinyl chair tip floor protectors* reduce scratches, noise and rust stains.

The felt base tips are best for wood floors, while the vinyl (without felt) tips are best for sliding applications. The bottom of the vinyl tips are slightly curved.

Typical applications are chairs, tables, desks, stools, bar stools, walkers and crutches.

Sled Glides



IEC's *clear plastic and felt sled glides* snap over rods or tubing to reduce scratching and noise. Also available with heavy-duty floor protection felt bonded to the plastic glide.

CLEAR VINYL STRETCH SLEEVE FELT FLOOR PROTECTORS

P/N	Fits Dia. (Inches)	1-9	10-24
IL24C-SLV-CLR-FELT	1/2 to 5/8	\$1.10	\$1.05
IL24-SLV-CLR-FELT	5/8 to 3/4	\$1.30	\$1.24
IL25-SLV-CLR-FELT	7/8 to 1-1/16	\$1.55	\$1.47
IL26-SLV-CLR-FELT	1-1/8 to 1-1/4	\$1.80	\$1.71
IL27-SLV-CLR-FELT	1-1/2 to 1-5/8	\$1.95	\$1.85
IL27B-SLV-CLR-FELT	1-5/8 to 1-3/4	\$2.15	\$2.04



CLEAR PVC FELT GLIDES

P/N	Fits Dia. (Inches & mm)	1-9	10-24
IL24C-PVC-CLR-FELT	1/2 (12mm)	\$1.05	\$0.99
IL24B-PVC-CLR-FELT	5/8 (16mm)	\$1.20	\$1.14
IL24A-PVC-CLR-FELT	3/4 (18mm)	\$1.30	\$1.23
IL24A2-PVC-CLR-FELT	13/16 (20mm)	\$1.40	\$1.33
IL24-PVC-CLR-FELT	7/8 (24mm)	\$1.50	\$1.42
IL25-PVC-CLR-FELT	1 (25mm)	\$1.70	\$1.61

VINYL REPLACEMENT CHAIR TIPS (WITH OR WITHOUT FELT)

P/N (Without FELT)	P/N (With FELT)	SIZE (Inches)	1-9 VINYL	1-9 FELT
IL24C-REPL-VNL	IL24C-REPL-FELT	1/2	\$0.60	\$0.85
IL24B-REPL-VNL	IL24B-REPL-FELT	5/8	\$0.70	\$0.95
IL24A-REPL-VNL	IL24A-REPL-FELT	3/4	\$0.80	\$1.05
IL24-REPL-VNL	IL24-REPL-FELT	7/8	\$0.90	\$1.15
IL25-REPL-VNL	IL25-REPL-FELT	1	\$1.05	\$1.30
IL25A-REPL-VNL	IL25A-REPL-FELT	1-1/8	\$1.20	\$1.45

CLEAR PLASTIC AND FELT SLED GLIDES

P/N	P/N	Tube/Rod Dia.	1-9 CLEAR	1-9 FELT
IL24D-SLED-CLR	IL24D-SLED-FELT	3/8	\$1.15	\$1.30
IL24C2-SLED-BLK	IL24C2-SLED-FELT	7/16	\$1.20	\$1.35
IL24B-SLED-CLR	IL24B-SLED-FELT	5/8	\$1.25	\$1.40
IL24A-SLED-CLR	IL24A-SLED-FELT	3/4	\$1.30	\$1.45
IL24-SLED-CLR	IL24-SLED-FELT	7/8	\$1.35	\$1.50
IL25-SLED-CLR	IL25-SLED-FELT	1	\$1.40	\$1.55
IL25A-SLED-CLR	IL25A-SLED-FELT	1-1/8	\$1.45	\$1.60



TUBE CAPS & PLUGS
SLIP ON FELT / SLIDERS
NON-SKID SLEEVES

Slip-On Felt Feet

These *slip-on felt feet* are available in two sizes. They slip over round or square legs with or without feet already installed in the legs. Useful for both noise reduction and floor protection.



Felt Cup Peel & Stick Floor Protectors

IEC's dark brown *felt cup, peel & stick floor protectors* reduce scratches, noise and rust stains. They are available in round, square and rectangular sizes. The 2 x 1/2 inch size has a curved (dome) shaped bottom.



Slip-On Sliders

IEC's *slip-on sliders* are designed to fit over round or square chair legs and existing glide feet. The brown sleeve sliders have a black base and the grey sleeve sliders have an off-white base. Also available with felt base. (See Slip-On Felt section).

Non-Skid Sleeves

IEC's *transparent non-skid sleeves* stretch to fit over various leg sizes, in both round and square shapes. For square legs increase size by 1/4 inch. The flexible sleeve will form to the square leg. The non-skid bottom of the sleeve will reduce scratching, noise, rust and stains.

Typical applications are chairs, tables, desks, stools, bar stools, walkers, crutches.

SLIP ON FELT FEET

P/N	Leg Size	Base Dia.	Color	1-9	10-24
IL26-FELT-SO-BR	3/4-1-1/4	1-1/4	BROWN	\$1.85	\$1.76
IL26-FELT-SO-GR	3/4-1-1/4	1-1/4	GREY	\$1.80	\$1.71
IL27-FELT-SO-BR	1-1-1/2	1-1/2	BROWN	\$2.05	\$1.94
IL27-FELT-SO-GR	1-1-1/2	1-1/2	GREY	\$1.95	\$1.84



FELT CUP "PEEL & STICK" FLOOR PROTECTORS

P/N (round)	P/N (square)	SIZE (Inches)	1-9	10-24
IL25-CUP-FELT-RD	IL25-CUP-FELT-SQ	1	\$1.20	\$1.14
IL26-CUP-FELT-RD	IL26-CUP-FELT-SQ	1-1/4	\$1.30	\$1.24
	IL26A2-CUP-FELT-SQ	1-1/5	\$1.40	\$1.33
IL27-CUP-FELT-RD	IL27-CUP-FELT-SQ	1-1/2	\$1.60	\$1.52
IL27A-CUP-FELT-RD	IL27A-CUP-FELT-SQ	2	\$1.75	\$1.66
	IL26-CUP-FELT-RE	1-1/4 x 1-1/2	\$1.50	\$1.43
	IL27G3-CUP-FELT-RE	3-1/5 x 9/16	\$1.55	\$1.47
	IL27A-CUP-FELT-RE-DOME	2 x 1/2	\$1.60	\$1.52

SLIP ON SLIDERS

P/N	Leg Size	Base Dia.	Color	Pkg	1-9	10-24
IL26-SLDR-SO-BR	3/4-1-1/4	1-3/4	BROWN	1	\$1.70	\$1.62
IL26-SLDR-SO-GR	3/4-1-1/4	1-3/4	GREY	1	\$1.65	\$1.57
IL27-SLDR-SO-BR	1-1-1/2	1-3/4	BROWN	1	\$1.90	\$1.81
IL27-SLDR-SO-GR	1-1-1/2	1-3/4	GREY	1	\$1.85	\$1.76



CLEAR NON-SKID SLEEVES

P/N	Fits Dia. (Inches)	1-9	10-24
IL24C-SLV-CLR	1/2 to 5/8	\$.90	\$.86
IL24-SLV-CLR	5/8 to 3/4	\$1.10	\$1.05
IL25-SLV-CLR	7/8 to 1-1/16	\$1.35	\$1.28
IL26-SLV-CLR	1-1/8 to 1-1/4	\$1.55	\$1.47
IL27-SLV-CLR	1-1/2 to 1-5/8	\$1.95	\$1.85
IL27B-SLV-CLR	1-5/8 to 1-3/4	\$2.25	\$2.14



TUBE CAPS & PLUGS

NICKEL & CHROME TOP

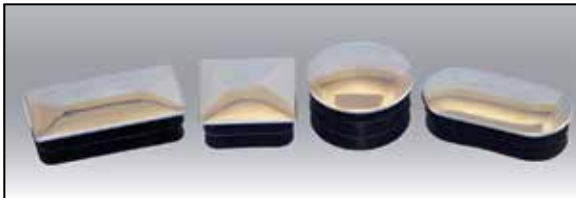
Tube Caps – Steel

These *nickel-plated metal spring caps* are available in round and square sizes. The caps have a bright lustrous finish. The round caps feature a slightly domed top.



Tube Caps – Chrome Top

These *chrome-top ribbed plastic tube caps* are available in round, square, rectangular and oval shapes. All have a slightly domed top. Mostly used for cap applications they also help furniture slide on carpet.



CHROME TOP TUBE CAPS — RECTANGLE

P/N (square)	Inch Size	Metric Size	Tubing Gauge
IL24D-CAP-CHR-RE	.394 x .787	10 x 20	14-19
IL24B-CAP-CHR-RE	.591 x .787	15 x 20	14-19
IL24B-CAP-CHR-RE2	.591 x 1.181	15 x 30	14-19
IL27B-CAP-CHR-RE	.787 x 1.575	20 x 40	14-19

CHROME TOP TUBE CAPS — OVAL

P/N (square)	Inch Size	Metric Size	Tubing Gauge
IL24D-CAP-CHR-OVL	.787 x .394	20 x 10	14-19
IL24B-CAP-CHR-OVL	1.181 x .591	30 x 15	14-19
IL24-CAP-CHR-OVL	1.575 x .787	40 x 20	14-19

STEEL TUBE CAPS — SQUARE

P/N (square)	Tubing O.D.	Tubing Gauge
IL24A-CAP-NKL	3/4	16-18
IL24-CAP-NKL	7/8	16-18
IL25-CAP-NKL	1	16-18

STEEL TUBE CAPS — ROUND

P/N (round)	Tubing O.D.	Tubing Gauge
IL24C-R-CAP-NKL	1/2	16-18
IL24B-R-CAP-NKL	5/8	16-18
IL24A-R-CAP-NKL	3/4	16-18
IL24-R-CAP-NKL	7/8	16-18
IL25-R-CAP-NKL	1	16-18
IL25A-R-CAP-NKL	1-1/8	16-18
IL26-R-CAP-NKL	1-1/4	16-18
IL27-R-CAP-NKL	1-1/2	16-18
IL27A-R-CAP-NKL	2	16-18

CHROME TOP TUBE CAPS — SQUARE

P/N (square)	Tubing O.D.	Tubing Gauge
IL24B-CAP-CHR	5/8	14-19
IL24A-CAP-CHR	3/4	14-19
IL25-CAP-CHR	1	14-19
IL25A-CAP-CHR	1-1/8	14-19
IL26A-CAP-CHR	1-3/8	14-19
IL27B2-CAP-CHR	1-9/16	14-19

CHROME TOP TUBE CAPS — ROUND

P/N (round)	Tubing O.D.	Tubing Gauge
IL24C-R-CAP-CHR	1/2	14-19
IL24B-R-CAP-CHR	5/8	14-19
IL24A-R-CAP-CHR	3/4	14-19
IL24-R-CAP-CHR	7/8	14-19
IL25-R-CAP-CHR	1	14-19
IL25A-R-CAP-CHR	1-1/8	14-19
IL26-R-CAP-CHR	1-1/4	14-19
IL26A-R-CAP-CHR	1-3/8	14-19
IL27A-R-CAP-CHR	2	14-19
IL27-R-CAP-CHR	1-1/2	14-19
IL27B2-R-CAP-CHR	1-5/8	14-19
IL27B-R-CAP-CHR	1-3/4	14-19
IL27A3-R-CAP-CHR	2-3/8	14-19



Bolt and Nut Caps

These *bolt and nut caps* are made from high-impact plastic with a UV stabilizer. Designed for both indoor and outdoor use, they protect against weathering and tampering while improving appearance.

Not recommended for high temperature applications. Some sizes (#10 thru 3/8) available in other finishes (antique white, walnut, chrome, and satin chrome).



BOLT NUT CAPS

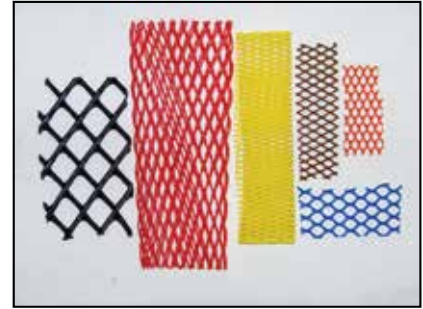
P/N (BLACK)	P/N (WHITE)	BOLT SIZE	LENGTH ACROSS INTERNAL FLATS	OVERALL HEIGHT
IL-CAP-NUT3-BLK	IL-CAP-NUT3-WH	#10	.306	5/16
IL-CAP-NUT4-BLK	IL-CAP-NUT4-WH	1/4	.425	3/8
IL-CAP-NUT5-BLK	IL-CAP-NUT5-WH	5/16	.484	1/2
IL-CAP-NUT6-BLK	IL-CAP-NUT6-WH	3/8	.550	5/8
IL-CAP-NUT6A-BLK	IL-CAP-NUT6A-WH	7/16	.622	3/4
IL-CAP-NUT7-BLK	IL-CAP-NUT7-WH	1/2	.740	7/8
IL-CAP-NUT8-BLK	IL-CAP-NUT8-WH	5/8	.937	1
IL-CAP-NUT5MM-BLK	IL-CAP-NUT5MM-WH	5mm	7.90mm / .31 in.	5/16
IL-CAP-NUT6MM-BLK	IL-CAP-NUT6MM-WH	6mm	9.80mm / .38 in.	3/8
IL-CAP-NUT8MM-BLK	IL-CAP-NUT8MM-WH	8mm	12.8mm / .50 in.	1/2
IL-CAP-NUT10MM-BLK	IL-CAP-NUT10MM-WH	10mm	16.8mm / .66 in.	5/8
IL-CAP-NUT14MM-BLK	IL-CAP-NUT14MM-WH	14mm	21.8mm / .86 in.	7/8
IL-CAP-NUT18MM-BLK	IL-CAP-NUT18MM-WH	18mm	26.8mm / 1.06 in.	1
IL-CAP-NUT20MM-BLK	IL-CAP-NUT20MM-WH	20mm	29.8mm / 1.17 in.	1-1/8
IL-CAP-NUT22MM-BLK	IL-CAP-NUT22MM-WH	22mm	31.8mm / 1.25 in.	1-1/4
IL-CAP-NUT24MM-BLK	IL-CAP-NUT24MM-WH	24mm	35.7mm / 1.41 in.	1-3/8



Plastic Stretch Netting

IEC's standard and heavy duty *plastic stretch netting* provides protection against damage to exterior surfaces of machined, polished, plated, coated and threaded areas. It will not retain moisture as other methods often do and is easy to install and remove. Common uses include during or after in-house machining to protect costly, value-added features during shipment.

Netting is color coded to easily identify dimensional size. Economically priced and available by the roll or cut to length. Offers ideal protection for irregularly shaped or sized items, useful in many situations. IEC's *plastic stretch netting* is quite versatile and eliminates the need for expensive special packaging solutions.



STANDARD - Plastic Stretch Netting

P/N	Outside Dia. Inch	Outside Dia. (mm)	Standard Color	Long Roll Length	Short Roll Length
IN-1/4	1/4-1/2	6.35 - 12.70	Yellow	3,000	650
IN-1/2	1/2-1	12.70 - 25.40	Blue	2,750	550
IN-1	1-1-1/2	25.40 - 50.80	Red	1,700	340
IN-1-2	1-2	25.40 - 50.80	Yellow	2,500	500
IN-1-1/2	1-1/2-2	38.10 - 50.80	Black	900	180
IN-2	2-2-1/2	50.80 - 63.50	White	800	160
IN-2-4	2-4	50.80 - 101.60	Red	1,500	300
IN-2-1/2	2-1/2-3	63.50 - 76.20	Yellow	600	120
IN-3	3-4	76.20 - 101.60	Green	450	90
IN-4	4-5	101.60 - 127.00	Orange	400	90
IN-5	5-6	127.00 - 152.40	Brown	50	N/A
IN-6	6-7	152.40 - 177.80	Blue	50	N/A
IN-7	7-8	177.80 - 203.20	Natural	40	N/A

HEAVY DUTY - Plastic Stretch Netting

P/N	Outside Dia. Inch	Outside Dia. (mm)	Standard Color	Standard Roll Length
INH-1/2	1/2	12.70	White	600
INH-1	1	25.40	Black	235
INH-1-1/2	1-1/2	38.10	Yellow	165
INH-2	2	50.80	Blue	110
INH-2-1/2	2-1/2	63.50	Red	90
INH-3	3	76.20	Natural	85
INH-4	4	101.60	White	85



Your Contact Information

NAME:	TITLE:
<input type="text"/>	<input type="text"/>
COMPANY:	E-MAIL:
<input type="text"/>	<input type="text"/>
STREET ADDRESS OR POB:	CITY:
<input type="text"/>	<input type="text"/>
STATE:	ZIP CODE:
<input type="text"/>	<input type="text"/>
PHONE:	FAX:
<input type="text"/>	<input type="text"/>

Standard Product Request

ITEM #	IEC PART NUMBER	DESCRIPTION	QUANTITY
1	<input type="text"/>	<input type="text"/>	<input type="text"/>

Comments/Special Instructions:

ITEM #	IEC PART NUMBER	DESCRIPTION	QUANTITY
2	<input type="text"/>	<input type="text"/>	<input type="text"/>

Comments/Special Instructions:

ITEM #	IEC PART NUMBER	DESCRIPTION	QUANTITY
3	<input type="text"/>	<input type="text"/>	<input type="text"/>

Comments/Special Instructions:

PLEASE FAX THIS FORM TO: 562-498-2275



INTERNATIONAL EQUIPMENT COMPONENTS, INC.

Phone: 562.597.4533 eMail: sales@iec-corp.com

Web: www.levelingmounts.com | www.iec-corp.com

Warranty & Disclaimer

IEC warrants each product against defects in workmanship and material for 90 days from the date of delivery to the user. The warranty is limited to the repair or replacement of any part(s) which are found by IEC to be defective and does not apply to ordinary wear tear, abuse, misapplications and altered products.

All data, dimensions and tables have been thoroughly checked but we can not assume liability for any possible errors or omissions. If you find an error, please notify us so we can correct it for future editions. We reserve the right to change designs and/or specifications without notice. In the event of a change, every attempt will be made to notify the current users.

© Copyright 2016. International Equipment Components, Inc. All rights reserved.

IEC INTERNATIONAL EQUIPMENT COMPONENTS, INC.
www.levelingmounts.com & www.iec-corp.com

HEAVY-DUTY LEVELERS

ANY THREAD ... ANY LENGTH ... ANY BASE

**LEVEL
ALIGN
STABILIZE
PROTECT**

Ph. 562.597.4533

IEC INTERNATIONAL EQUIPMENT COMPONENTS, INC.
www.levelingmounts.com & www.iec-corp.com

MEDIUM-DUTY LEVELERS

ANY THREAD ... ANY LENGTH ... ANY BASE

**LEVEL
ALIGN
STABILIZE
PROTECT**

Ph. 562.597.4533

IEC INTERNATIONAL EQUIPMENT COMPONENTS, INC.
www.levelingmounts.com & www.iec-corp.com

LIGHT-DUTY LEVELERS

ANY THREAD ... ANY LENGTH ... ANY BASE

**LEVEL
ALIGN
STABILIZE
PROTECT**

Ph. 562.597.4533

IEC INTERNATIONAL EQUIPMENT COMPONENTS, INC.
www.levelingmounts.com & www.iec-corp.com

METRIC LEVELERS

ANY THREAD ... ANY LENGTH ... ANY BASE

**LEVEL
ALIGN
STABILIZE
PROTECT**

Ph. 562.597.4533

**INTERNATIONAL
EQUIPMENT COMPONENTS, INC.**

2201 E. Willow Street, D-104,
Signal Hill, CA 90755
Email: sales@iec-corp.com
Phone: 562-597-4533
Fax: 562-498-2275
Web: www.iec-corp.com

IEC INTERNATIONAL EQUIPMENT COMPONENTS, INC.
www.levelingmounts.com & www.iec-corp.com

KNOB & HANDLE

**CLAMP
ADJUST
STABILIZE
FASTEN**

Ph. 562.597.4533

IEC INTERNATIONAL EQUIPMENT COMPONENTS, INC.
www.levelingmounts.com & www.iec-corp.com

CAP & PLUG PRODUCTS

**FEET
SLIDE
PROTECT
FINISH**

Ph. 562.597.4533

IEC INTERNATIONAL EQUIPMENT COMPONENTS, INC.
www.levelingmounts.com & www.iec-corp.com

**SURFACE PROTECTION
SLIDERS, GRIPPERS & FELT**

**CUSHION
QUIET
SLIDE
PROTECT**

Ph. 562.597.4533

IEC INTERNATIONAL EQUIPMENT COMPONENTS, INC.
www.levelingmounts.com & www.iec-corp.com

LEG & CASTER PRODUCTS

**LEVEL
EXTEND
SUPPORT
ROLL**

Ph. 562.597.4533