



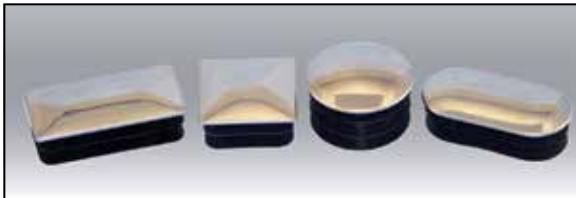
### Tube Caps – Steel

These *nickel-plated metal spring caps* are available in round and square sizes. The caps have a bright lustrous finish. The round caps feature a slightly domed top.



### Tube Caps – Chrome Top

These *chrome-top ribbed plastic tube caps* are available in round, square, rectangular and oval shapes. All have a slightly domed top. Mostly used for cap applications they also help furniture slide on carpet.



#### CHROME TOP TUBE CAPS — RECTANGLE

P/N (square)	Inch Size	Metric Size	Tubing Gauge
IL24D-CAP-CHR-RE	.394 x .787	10 x 20	14-19
IL24B-CAP-CHR-RE	.591 x .787	15 x 20	14-19
IL24B-CAP-CHR-RE2	.591 x 1.181	15 x 30	14-19
IL27B-CAP-CHR-RE	.787 x 1.575	20 x 40	14-19

#### CHROME TOP TUBE CAPS — OVAL

P/N (square)	Inch Size	Metric Size	Tubing Gauge
IL24D-CAP-CHR-OVL	.787 x .394	20 x 10	14-19
IL24B-CAP-CHR-OVL	1.181 x .591	30 x 15	14-19
IL24-CAP-CHR-OVL	1.575 x .787	40 x 20	14-19

#### STEEL TUBE CAPS — SQUARE

P/N (square)	Tubing O.D.	Tubing Gauge
IL24A-CAP-NKL	3/4	16-18
IL24-CAP-NKL	7/8	16-18
IL25-CAP-NKL	1	16-18

#### STEEL TUBE CAPS — ROUND

P/N (round)	Tubing O.D.	Tubing Gauge
IL24C-R-CAP-NKL	1/2	16-18
IL24B-R-CAP-NKL	5/8	16-18
IL24A-R-CAP-NKL	3/4	16-18
IL24-R-CAP-NKL	7/8	16-18
IL25-R-CAP-NKL	1	16-18
IL25A-R-CAP-NKL	1-1/8	16-18
IL26-R-CAP-NKL	1-1/4	16-18
IL27-R-CAP-NKL	1-1/2	16-18
IL27A-R-CAP-NKL	2	16-18

#### CHROME TOP TUBE CAPS — SQUARE

P/N (square)	Tubing O.D.	Tubing Gauge
IL24B-CAP-CHR	5/8	14-19
IL24A-CAP-CHR	3/4	14-19
IL25-CAP-CHR	1	14-19
IL25A-CAP-CHR	1-1/8	14-19
IL26A-CAP-CHR	1-3/8	14-19
IL27B2-CAP-CHR	1-9/16	14-19

#### CHROME TOP TUBE CAPS — ROUND

P/N (round)	Tubing O.D.	Tubing Gauge
IL24C-R-CAP-CHR	1/2	14-19
IL24B-R-CAP-CHR	5/8	14-19
IL24A-R-CAP-CHR	3/4	14-19
IL24-R-CAP-CHR	7/8	14-19
IL25-R-CAP-CHR	1	14-19
IL25A-R-CAP-CHR	1-1/8	14-19
IL26-R-CAP-CHR	1-1/4	14-19
IL26A-R-CAP-CHR	1-3/8	14-19
IL27A-R-CAP-CHR	2	14-19
IL27-R-CAP-CHR	1-1/2	14-19
IL27B2-R-CAP-CHR	1-5/8	14-19
IL27B-R-CAP-CHR	1-3/4	14-19
IL27A3-R-CAP-CHR	2-3/8	14-19