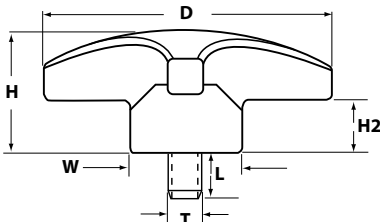
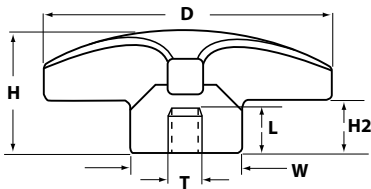




**3 Lobe Knobs with
Rubber Cushioned Grip**

Glass-filled polypropylene 3-lobe knobs with Rubber Cushioned Grip are offered with a zinc-plated steel stud or threaded insert. Standard color is black, but may be ordered in grey, white, blue, yellow or red.



3 LOBE SOCKET STYLE KNOB WITH RUBBER CUSHIONED GRIP

P/N	Dia.	Height	Width	H2	Thread	Length
IL424-4X38-RC	1-3/16	5/8	1/2	3/16	1/4-20	3/8
IL424A-4X50-RC	1-3/4	7/8	3/4	1/8	1/4-20	1/2
IL424A-5X50-RC	1-3/4	7/8	3/4	1/8	5/16-18	1/2
IL424A-6X50-RC	1-3/4	7/8	3/4	1/8	3/8-16	1/2
IL425A-5X62-RC	2-3/16	1-1/8	7/8	3/16	5/16-18	5/8
IL425A-6X62-RC	2-3/16	1-1/8	7/8	3/16	3/8-16	5/8
IL425A-7X62-RC	2-3/16	1-1/8	7/8	3/16	1/2-13	5/8

3 LOBE STUD STYLE KNOB WITH RUBBER CUSHIONED GRIP

P/N	Dia.	Height	Width	H2	Thread	Length
IL426A-4X50-RC	1-3/16	5/8	1/2	3/16	1/4-20	1/2
IL426A-4X75-RC	1-3/16	5/8	1/2	3/16	1/4-20	3/4
IL426A-4X1-RC	1-3/16	5/8	1/2	3/16	1/4-20	1
IL426A-4X125-RC	1-3/16	5/8	1/2	3/16	1/4-20	1-1/4
IL426-4X50-RC	1-3/4	7/8	3/4	1/8	1/4-20	1/2
IL426-4X75-RC	1-3/4	7/8	3/4	1/8	1/4-20	3/4
IL426-4X1-RC	1-3/4	7/8	3/4	1/8	1/4-20	1
IL426-4X125-RC	1-3/4	7/8	3/4	1/8	1/4-20	1-1/4
IL426-5X50-RC	1-3/4	7/8	3/4	1/8	1/4-20	1/2
IL426-5X75-RC	1-3/4	7/8	3/4	1/8	1/4-20	3/4
IL426-5X1-RC	1-3/4	7/8	3/4	1/8	1/4-20	1
IL426-5X125-RC	1-3/4	7/8	3/4	1/8	1/4-20	1-1/4
IL426-6X1-RC	1-3/4	7/8	3/4	1/8	1/4-20	1
IL426-6X125-RC	1-3/4	7/8	3/4	1/8	1/4-20	1-1/4
IL426-6X2-RC	1-3/4	7/8	3/4	1/8	1/4-20	2
IL427-4X50-RC	2-3/16	1-1/8	7/8	3/16	1/4-20	1/2
IL427-4X75-RC	2-3/16	1-1/8	7/8	3/16	1/4-20	3/4
IL427-4X1-RC	2-3/16	1-1/8	7/8	3/16	1/4-20	1
IL427-4X125-RC	2-3/16	1-1/8	7/8	3/16	1/4-20	1-1/4
IL427-5X50-RC	2-3/16	1-1/8	7/8	3/16	5/16-18	1/2
IL427-5X75-RC	2-3/16	1-1/8	7/8	3/16	5/16-18	3/4
IL427-5X1-RC	2-3/16	1-1/8	7/8	3/16	5/16-18	1
IL427-5X125-RC	2-3/16	1-1/8	7/8	3/16	5/16-18	1-1/4
IL427-6X1-RC	2-3/16	1-1/8	7/8	3/16	3/8-16	1
IL427-6X125-RC	2-3/16	1-1/8	7/8	3/16	3/8-16	1-1/4
IL427-6X2-RC	2-3/16	1-1/8	7/8	3/16	3/8-16	2
IL427-7X1-RC	2-3/16	1-1/8	7/8	3/16	1/2-13	1
IL427-7X150-RC	2-3/16	1-1/8	7/8	3/16	1/2-13	1-1/2
IL427-7X2-RC	2-3/16	1-1/8	7/8	3/16	1/2-13	2



INTERNATIONAL EQUIPMENT COMPONENTS, INC.

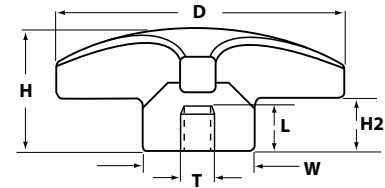
Phone: 562.597.4533 eMail: sales@iec-corp.com

Web: www.equipmentknobs.com | www.iec-corp.com

KNOBS
4 LOBE CUSHIONED GRIP KNOBS

4 Lobe Knobs with Rubber Cushioned Grip

Glass-filled polypropylene 4-lobe knobs with Rubber Cushioned Grip are offered with a zinc-plated steel stud or threaded insert. Standard color is black, but may be ordered in grey, white, blue, yellow or red.



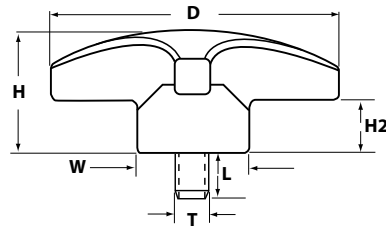
4 LOBE SOCKET STYLE KNOB WITH RUBBER CUSHIONED GRIP

P/N	Dia.	Height	Width	H2	Thread	Length
IL431A-3FX38-RC	1-3/8	11/16	9/16	3/16	10-32	3/8
IL431A-4X38-RC	1-3/8	11/16	9/16	3/16	1/4-20	3/8
IL432A-3FX50-RC	1-3/4	3/4	11/16	1/8	10-32	1/2
IL432A-4X50-RC	1-3/4	3/4	11/16	1/8	1/4-20	1/2
IL432A-5X50-RC	1-3/4	3/4	11/16	1/8	5/16-18	1/2
IL432A-6X50-RC	1-3/4	3/4	11/16	1/8	3/8-16	1/2
IL433A-3FX62-RC	2	7/8	7/8	3/16	10-32	5/8
IL433A-4X62-RC	2	7/8	7/8	3/16	1/4-20	5/8
IL433A-5X62-RC	2	7/8	7/8	3/16	5/16-18	5/8
IL433A-6X62-RC	2	7/8	7/8	3/16	3/8-16	5/8
IL433A-7X62-RC	2	7/8	7/8	3/16	1/2-13	5/8
IL434A-4X75-RC	2-1/2	1-1/8	1-1/4	3/16	1/4-20	3/4
IL434A-5X75-RC	2-1/2	1-1/8	1-1/4	3/16	5/16-18	3/4
IL434A-6X75-RC	2-1/2	1-1/8	1-1/4	3/16	3/8-16	3/4
IL434A-7X75-RC	2-1/2	1-1/8	1-1/4	3/16	1/2-13	3/4
IL435A-4X87-RC	3	1-1/4	1-1/2	7/32	1/4-20	7/8
IL435A-5X87-RC	3	1-1/4	1-1/2	7/32	5/16-18	7/8
IL435A-6X87-RC	3	1-1/4	1-1/2	7/32	3/8-16	7/8
IL435A-7X87-RC	3	1-1/4	1-1/2	7/32	1/2-13	7/8



**4 Lobe Knobs with
Rubber Cushioned Grip**

Glass-filled polypropylene 4-lobe knobs with Rubber Cushioned Grip are offered with a zinc-plated steel stud or threaded insert. Standard color is black, but may be ordered in grey, white, blue, yellow or red.



4 LOBE STUD STYLE KNOB WITH RUBBER CUSHIONED GRIP

P/N	Dia.	Height	Width	H2	Thread	Length
IL441A-4X50-RC	1-3/8	11/16	9/16	3/16	1/4-20	1/2
IL441A-4X75-RC	1-3/8	11/16	9/16	3/16	1/4-20	3/4
IL441A-4X1-RC	1-3/8	11/16	9/16	3/16	1/4-20	1
IL441A-4X125-RC	1-3/8	11/16	9/16	3/16	1/4-20	1-1/4
IL442A-4X50-RC	1-3/4	3/4	11/16	1/8	1/4-20	1/2
IL442A-4X75-RC	1-3/4	3/4	11/16	1/8	1/4-20	3/4
IL442A-4X1-RC	1-3/4	3/4	11/16	1/8	1/4-20	1
IL442A-4X125-RC	1-3/4	3/4	11/16	1/8	1/4-20	1-1/4
IL442A-5X50-RC	1-3/4	3/4	11/16	1/8	5/16-18	1/2
IL442A-5X75-RC	1-3/4	3/4	11/16	1/8	5/16-18	3/4
IL442A-5X1-RC	1-3/4	3/4	11/16	1/8	5/16-18	1
IL442A-5X125-RC	1-3/4	3/4	11/16	1/8	5/16-18	1-1/4
IL442A-6X1-RC	1-3/4	3/4	11/16	1/8	3/8-16	1
IL442A-6X125-RC	1-3/4	3/4	11/16	1/8	3/8-16	1-1/4
IL442A-6X2-RC	1-3/4	3/4	11/16	1/8	3/8-16	2
IL443A-4x50-RC	2	7/8	7/8	3/16	1/2-13	1/2
IL443A-4x75-RC	2	7/8	7/8	3/16	1/2-13	3/4
IL443A-4x1-RC	2	7/8	7/8	3/16	1/2-13	1
IL443A-4x125-RC	2	7/8	7/8	3/16	1/2-13	1-1/4
IL443A-5x50-RC	2	7/8	7/8	3/16	1/2-13	1/2
IL443A-5x75-RC	2	7/8	7/8	3/16	1/2-13	3/4
IL443A-5x1-RC	2	7/8	7/8	3/16	1/2-13	1
IL443A-5x125-RC	2	7/8	7/8	3/16	1/2-13	1-1/4
IL443A-6X1-RC	2	7/8	7/8	3/16	1/2-13	1
IL4423-6X125-RC	2	7/8	7/8	3/16	1/2-13	1-1/4
IL443A-6X2-RC	2	7/8	7/8	3/16	1/2-13	2
IL443A-7X1-RC	2	7/8	7/8	3/16	1/2-13	1
IL4423-7X150-RC	2	7/8	7/8	3/16	1/2-13	1-1/4
IL443A-7X2-RC	2	7/8	7/8	3/16	1/2-13	2
IL444A-5X50-RC	2-1/2	1-1/8	1-1/4	3/16	5/16-18	1/2
IL444A-5X75-RC	2-1/2	1-1/8	1-1/4	3/16	5/16-18	3/4
IL444A-5X1-RC	2-1/2	1-1/8	1-1/4	3/16	5/16-18	1
IL444A-5X125-RC	2-1/2	1-1/8	1-1/4	3/16	5/16-18	1-1/4
IL444A-6X1-RC	2-1/2	1-1/8	1-1/4	3/16	3/8-16	1
IL444A-6X125-RC	2-1/2	1-1/8	1-1/4	3/16	3/8-16	1-1/4
IL444A-6X2-RC	2-1/2	1-1/8	1-1/4	3/16	3/8-16	2
IL444A-7X1-RC	2-1/2	1-1/8	1-1/4	3/16	1/2-13	2
IL444A-7X150-RC	2-1/2	1-1/8	1-1/4	3/16	1/2-13	1-1/2
IL444A-7X2-RC	2-1/2	1-1/8	1-1/4	3/16	1/2-13	2

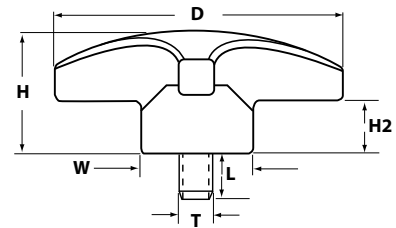
PART NUMBERS CONTINUED ON NEXT PAGE



KNOBS
4 & 5 LOBE CUSHIONED
GRIP KNOBS

4 Lobe Knobs with Rubber Cushioned Grip

Glass-filled polypropylene 4-lobe knobs with Rubber Cushioned Grip are offered with a zinc-plated steel stud or threaded insert. Standard color is black, but may be ordered in grey, white, blue, yellow or red.

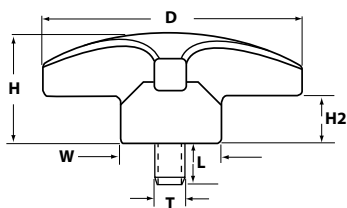


4 LOBE STUD STYLE KNOB WITH RUBBER CUSHIONED GRIP

P/N	Dia.	Height	Width	H2	Thread	Length
IL445A-5x50-RC	3	1-1/4	1-1/2	7/32	5/16-18	1/2
IL445A-5x75-RC	3	1-1/4	1-1/2	7/32	5/16-18	3/4
IL445A-5x1-RC	3	1-1/4	1-1/2	7/32	5/16-18	1
IL445A-5x125-RC	3	1-1/4	1-1/2	7/32	5/16-18	1-1/4
IL445A-6x1-RC	3	1-1/4	1-1/2	7/32	3/8-16	1
IL445A-6x125-RC	3	1-1/4	1-1/2	7/32	3/8-16	1-1/4
IL445A-6x2-RC	3	1-1/4	1-1/2	7/32	3/8-16	2
IL445A-7x1-RC	3	1-1/4	1-1/2	7/32	1/2-13	1
IL445A-7x150-RC	3	1-1/4	1-1/2	7/32	1/2-13	1-1/2
IL445A-7x2-RC	3	1-1/4	1-1/2	7/32	1/2-13	2

5 Lobe Knobs with Rubber Cushioned Grip

Glass-filled polypropylene 5-lobe knobs with Rubber Cushioned Grip are offered with a zinc-plated steel stud or threaded insert (socket or thru-hole style). Standard color is black, but may be ordered in grey, white, blue, yellow or red.



5 LOBE STUD STYLE KNOB WITH RUBBER CUSHIONED GRIP

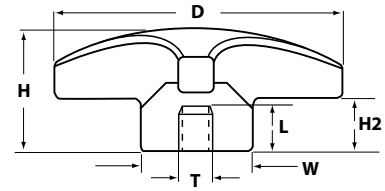
P/N	Dia.	Height	Width	H2	Thread	Length
IL458-4x75-RC	1-1/2	1-1/8	11/16	3/16	1/4-20	3/4
IL458-4x1-RC	1-1/2	1-1/8	11/16	3/16	1/4-20	1
IL458-4x125-RC	1-1/2	1-1/8	11/16	3/16	1/4-20	1-1/4
IL458-5x150-RC	1-1/2	1-1/8	11/16	3/16	5/16-18	1-1/2
IL458-6x150-RC	1-1/2	1-1/8	11/16	3/16	3/8-16	1-1/2
IL458-6x175-RC	1-1/2	1-1/8	11/16	3/16	3/8-16	1-3/4
IL458A-Ax1-RC	1-7/8	1-1/8	15/16	3/16	1/4-20	1
IL458A-Ax125-RC	1-7/8	1-1/8	15/16	3/16	1/4-20	1-1/4
IL458A-5x1-RC	1-7/8	1-1/8	15/16	3/16	5/16-18	1
IL458A-5x150-RC	1-7/8	1-1/8	15/16	3/16	5/16-18	1-1/2
IL458A-6x150-RC	1-7/8	1-1/8	15/16	3/16	3/8-16	1-1/2
IL458A-6x175-RC	1-7/8	1-1/8	15/16	3/16	3/8-16	1-3/4
IL458B-4x1-RC	2-1/4	1-1/8	1-1/4	3/16	1/4-20	1
IL458B-4x125-RC	2-1/4	1-1/8	1-1/4	3/16	1/4-20	1-1/4
IL458B-5x125-RC	2-1/4	1-1/8	1-1/4	3/16	5/16-18	1-1/4
IL458B-6x1-RC	2-1/4	1-1/8	1-1/4	3/16	3/8-16	1
IL458B-6x150-RC	2-1/4	1-1/8	1-1/4	3/16	3/8-16	1-1/2
IL458B-6x175-RC	2-1/4	1-1/8	1-1/4	3/16	3/8-16	1-3/4



KNOBS
5 LOBE CUSHIONED
GRIP KNOBS

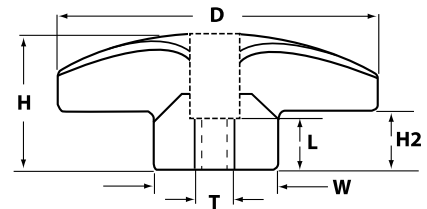
5 Lobe Knobs with Rubber Cushioned Grip

Glass-filled polypropylene 5-lobe knobs with Rubber Cushioned Grip are offered with a zinc-plated steel stud or threaded insert (socket or thru-hole style). Standard color is black, but may be ordered in grey, white, blue, yellow or red.



5 LOBE SOCKET STYLE KNOB WITH RUBBER CUSHIONED GRIP

P/N	Dia.	Height	Width	H2	Thread	Length
IL450A-4X50-RC	1-1/2	1-1/8	11/16	3/16	1/4-20	1/2
IL450A-5X50-RC	1-1/2	1-1/8	11/16	3/16	5/16-18	1/2
IL450A-6X50-RC	1-1/2	1-1/8	11/16	3/16	3/8-16	1/2
IL451A-4X50-RC	1-7/8	1-1/8	15/16	3/16	1/4-20	1/2
IL451A-5X50-RC	1-7/8	1-1/8	15/16	3/16	5/16-18	1/2
IL451A-6X50-RC	1-7/8	1-1/8	15/16	3/16	3/8-16	1/2
IL451A-7X50-RC	1-7/8	1-1/8	15/16	3/16	1/2-13	1/2
IL452A-4X50-RC	2-1/4	1-1/8	1-1/4	3/16	1/4-20	1/2
IL452A-5X50-RC	2-1/4	1-1/8	1-1/4	3/16	5/16-18	1/2
IL452A-6X50-RC	2-1/4	1-1/8	1-1/4	3/16	3/8-16	1/2
IL452A-7X50-RC	2-1/4	1-1/8	1-1/4	3/16	1/2-13	1/2



5 LOBE KNOB THRU HOLE WITH STEEL INSERT AND RUBBER GRIP

P/N	Dia.	Height	Width	H2	Thread	Length
IL450A-4X50-TH-RC	1-1/2	1-1/8	11/16	3/16	1/4-20	1/2
IL450A-5X50-TH-RC	1-1/2	1-1/8	11/16	3/16	5/16-18	1/2
IL450A-6X50-TH-RC	1-1/2	1-1/8	11/16	3/16	3/8-16	1/2
IL451A-4X50-TH-RC	1-7/8	1-1/8	15/16	3/16	1/4-20	1/2
IL451A-5X50-TH-RC	1-7/8	1-1/8	15/16	3/16	5/16-18	1/2
IL451A-6X50-TH-RC	1-7/8	1-1/8	15/16	3/16	3/8-16	1/2
IL451A-7X50-TH-RC	1-7/8	1-1/8	15/16	3/16	1/2-13	1/2
IL452A-4X50-TH-RC	2-1/4	1-1/8	1-1/4	3/16	1/4-20	1/2
IL452A-5X50-TH-RC	2-1/4	1-1/8	1-1/4	3/16	5/16-18	1/2
IL452A-6X50-TH-RC	2-1/4	1-1/8	1-1/4	3/16	3/8-16	1/2
IL452A-7X50-TH-RC	2-1/4	1-1/8	1-1/4	3/16	1/2-13	1/2